

## MINIREGOLATORE STANDARD

CODICE DI ORDINAZIONE ORDER CODE		MREG 2-08	MREG 2-04
Attacchi Ports		G1/4"	G1/4"
Temperatura di esercizio Temperature range		max +50°C	max +50°C
Pressione di alimentazione Inlet pressure range	$p_{1\ min}$ $p_{1\ max}$	0 bar; 0 MPa 10 bar; 1 MPa	0 bar; 0 MPa 10 bar; 1 MPa
Pressione di utilizzo Outlet pressure range	$p_{2\ min}$ $p_{2\ max}$	0.5 bar; 0.05 MPa 8 bar; 0.8 MPa	0.5 bar; 0.05 MPa 4 bar; 0.4 MPa
Differenza minima di pressione ( $\Delta p$ ) Minimum pressure difference ( $\Delta p$ )	$p_1 - p_2$	0.2 bar; 0.02 MPa	0.2 bar; 0.02 MPa
Isteresi Hysteresis	$p_1 = 10\ bar / p_2 = 0\ bar$ $p_1 = 10\ bar / p_2 = 8\ bar$	1.6 0.6	1.6 0.6
Portata raccomandata Recommended flow rate	$p_2 = 6.3\ bar\ a\ 25\ m/s$ $p_2 = 6.3\ bar\ at\ 25\ m/s$	$Q_n$	550 NI/min

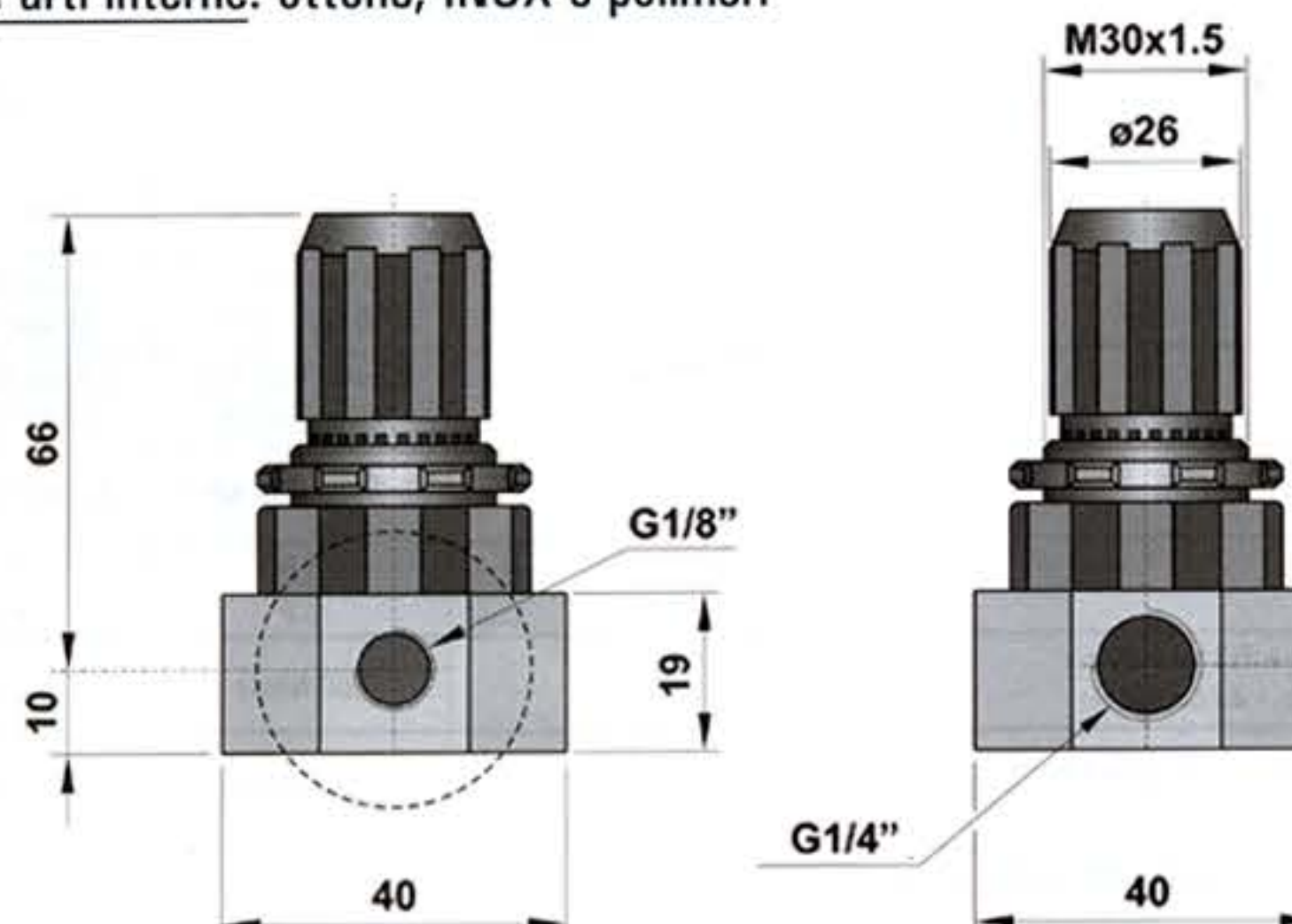
### Materiali

Corpo: alluminio 11S anodizzato naturale

Molle: INOX

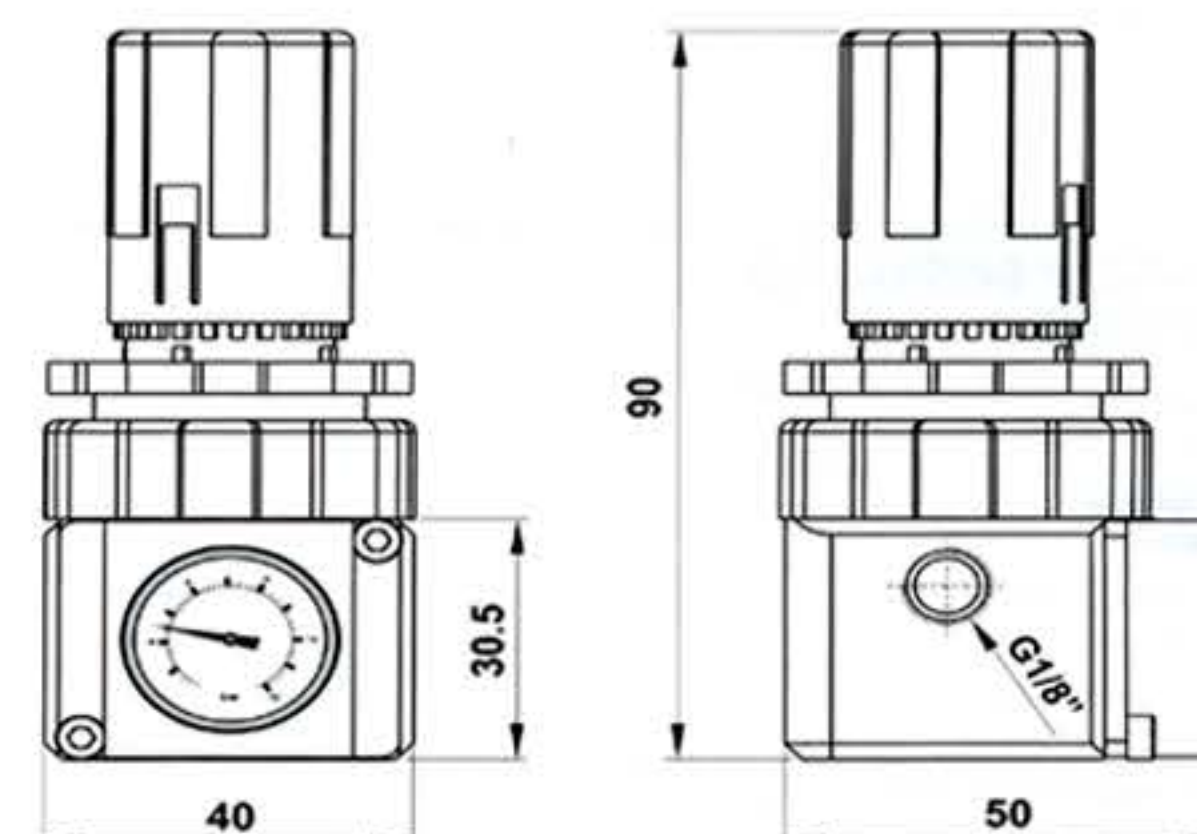
Guarnizioni: NBR

Parti interne: ottone, INOX e polimeri



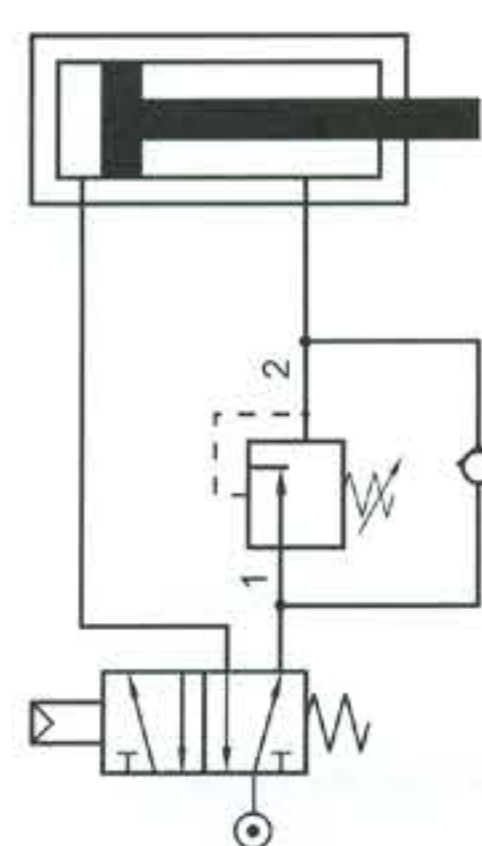
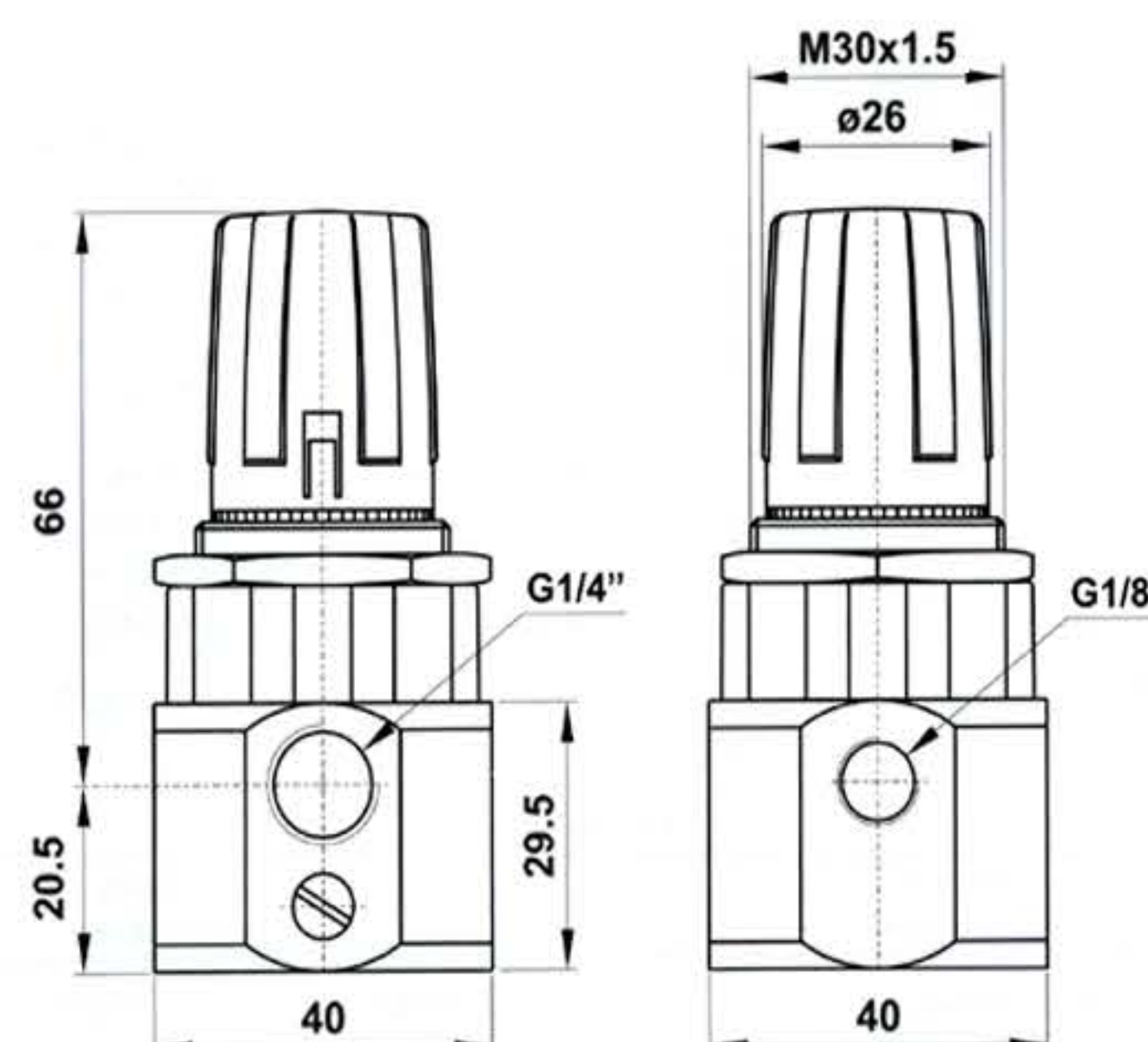
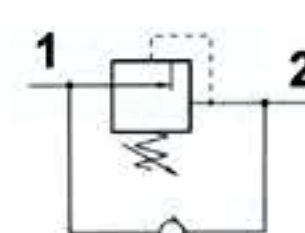
## MINIREGOLATORE CON MANOMETRO

CODICE DI ORDINAZIONE ORDER CODE		16.082.4
Attacchi Ports		G1/8"
Temperatura di esercizio Temperature range		max +50°C
Peso Weight		190 g
Pressione di alimentazione Inlet pressure range	$p_{1\ min}$ $p_{1\ max}$	0 bar; 0 MPa 16 bar; 1.6 MPa
Pressione di utilizzo Outlet pressure range	$p_{2\ min}$ $p_{2\ max}$	0.5 bar; 0.05 MPa 8 bar; 0.8 MPa
Differenza minima di pressione ( $\Delta p$ ) Minimum pressure difference ( $\Delta p$ )	$p_1 - p_2$	0.2 bar; 0.02 MPa
Isteresi Hysteresis	$p_1 = 10\ bar / p_2 = 0\ bar$ $p_1 = 10\ bar / p_2 = 8\ bar$	0.5 0.4
Portata raccomandata Recommended flow rate	$p_2 = 6\ bar\ a\ 25\ m/s$ $p_2 = 6\ bar\ at\ 25\ m/s$	$Q_n$
Portata massima Maximum flow rate	$p_1 = 10\ bar; p_2 = 6.3\ bar; \Delta p = 1\ bar$	$Q_{max}$
		500 NI/min
		1000 NI/min



## MINIREGOLATORE con by-pass

CODICE DI ORDINAZIONE ORDER CODE		16.070.4
Attacchi Ports		G1/4"
Temperatura di esercizio Temperature range		max +50°C
Pressione di alimentazione Inlet pressure range	$p_{1\ min}$ $p_{1\ max}$	0 bar; 0 MPa 10 bar; 1 MPa
Pressione di utilizzo Outlet pressure range	$p_{2\ min}$ $p_{2\ max}$	0.5 bar; 0.05 MPa 8 bar; 0.8 MPa
Differenza minima di pressione ( $\Delta p$ ) Minimum pressure difference ( $\Delta p$ )	$p_1 - p_2$	0.2 bar; 0.02 MPa
Isteresi Hysteresis	$p_1 = 10\ bar / p_2 = 0\ bar$ $p_1 = 10\ bar / p_2 = 8\ bar$	1.6 0.6
Portata raccomandata Recommended flow rate	$p_2 = 6.3\ bar\ a\ 25\ m/s$ $p_2 = 6.3\ bar\ at\ 25\ m/s$	$Q_n$
Portata 2 $\Rightarrow$ 1 Flow rate 2 $\Rightarrow$ 1	$p = 6\ bar; \Delta p = 1\ bar$	
		550 NI/min
		180 NI/min



SCHEMA DI MONTAGGIO